

CLIANTECH SOLUTIONS

YOUR PATH TO TECHNOLOGY

TURNKEY SOLUTION FOR **SOLAR** MODULE MANUFACTURING

www.cliantechsolutions.com

ABOUT US

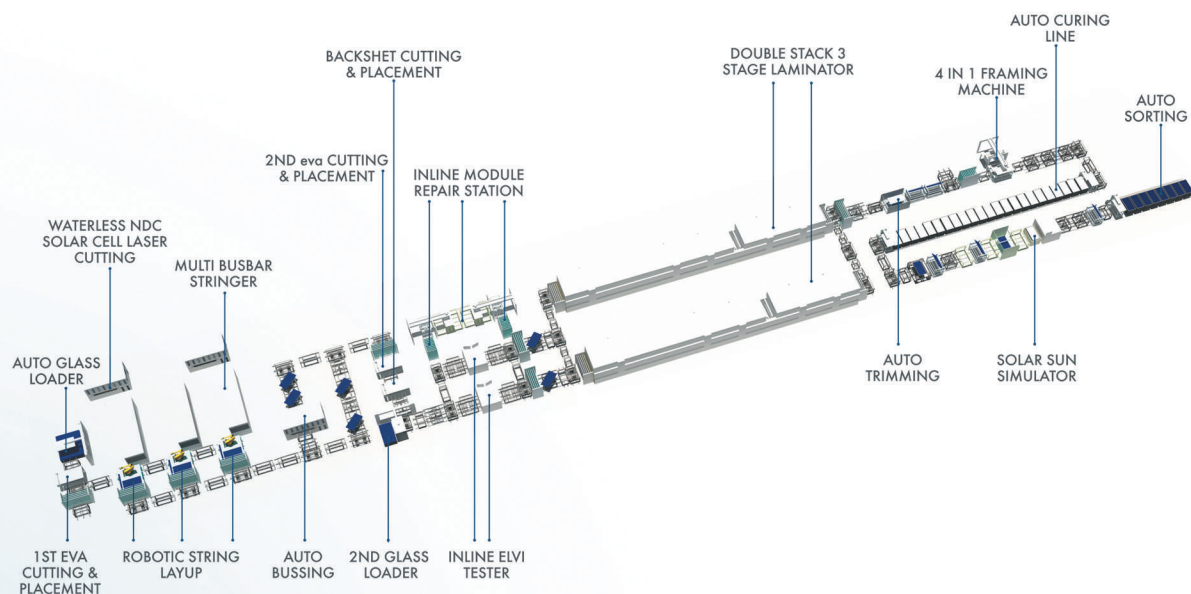
Cliantech Solutions, established in 2019, is the brainchild of an exceptionally experienced team boasting over 20 Years of collective expertise within the Solar Industry. With a steadfast commitment to addressing the burgeoning demand for Solar Module and Cell Manufacturing in India, our sole mission is to provide unrivalled Turnkey Solutions to our valued clients.

We have earned our place at the forefront of the industry, focusing on delivering state-of-the-art equipment for Solar Module manufacturing, bolstered by enduring relationships with more than 35 dedicated customers, including 25 Turnkey Lines. At Cliantech, we prioritize customer satisfaction and ensure seamless after-sales support through a proficient team of over 40 service engineers strategically positioned in various cities across the nation.

Collaborating with esteemed technology partners such as GAORUN, VISUAL, ASICPY, HSPV and AUTO-ONE, each excelling in their respective machinery domains, we have successfully crafted one of the most exceptional Turnkey Solutions for PV Manufacturing.

Cliantech takes pride in our substantial footprint, with over 15 GW of machinery installations across India. Our extensive network encompasses Sales and Services offices in key regions, including New Delhi NCR, Gujarat and Ambala Haryana. Cliantech is actively pursuing an international expansion strategy and has recently secured a successful partnership with the United Arab Emirates (UAE) to establish a 600MW line, marking a significant step in our global business expansion endeavours.

SOLAR MODULE PRODUCTION LINE



OUR EXCLUSIVE TECHNOLOGY PARTNERS



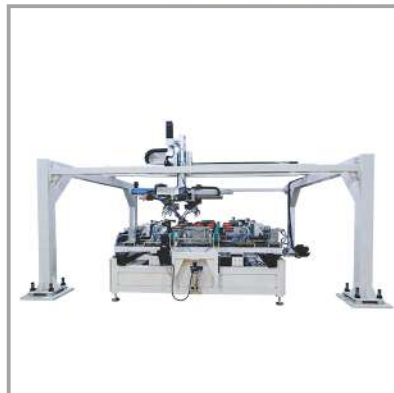
www.cliantech.com

CLIANTECH

AUTO BUSSING



AUTOMATIC 4 IN1
FRAMING MACHINE



AUTO TRIMMING



INLINE HIPOT



AUTO LABELLING



ROBOTIC LAYUP



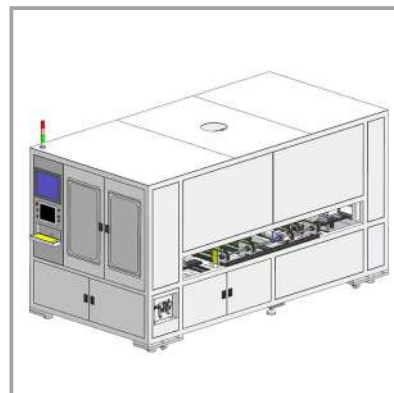
AUTO TAPPING MACHINE



AUTO CORNER MILLING



AUTO JBOX SOLDERING



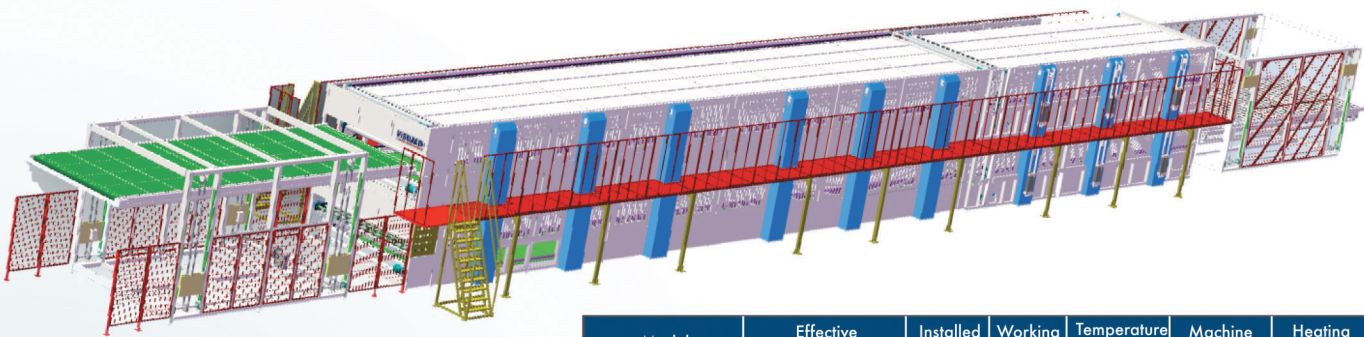
AUTOMATIC LAMINATOR MANUFACTURER



Model	Effective Lamination Area	Installed Power	Working Power	Temperature Accuracy	Machine Colour	Heating Mode
KSL2788 OAC-D	2700mm×8800mm	199	90	± 1	Customized	Oil Heating
KSL2778 OAC-D	2700mm×7800mm	193	84	± 1	Customized	Oil Heating
KSL2776 OAC-D	2700mm×7600mm	189	81	± 1	Customized	Oil Heating
KSL2774 OAC-D	2700mm×7400mm	187	79	± 1	Customized	Oil Heating

** The size of the Laminator can be customized as per Customer Requirement

DOUBLE STAGE LAMINATOR



THREE STAGE DOUBLE STACK LAMINATOR

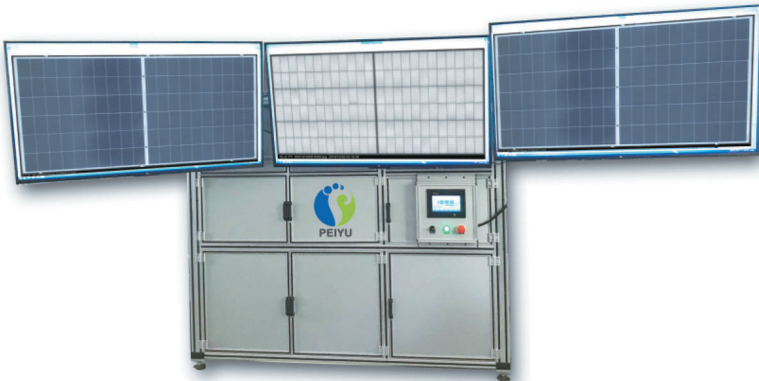
Model	Effective Lamination Area	Installed Power	Working Power	Temperature Accuracy	Machine Colour	Heating Mode
KSL2788 OAC-ED	2700mm×8800mm	414	195	± 1	Customized	Oil Heating
KSL2778 OAC-ED	2700mm×7800mm	403	184	± 1	Customized	Oil Heating
KSL2776 OAC-ED	2700mm×7600mm	395	189	± 1	Customized	Oil Heating
KSL2774 OAC-ED	2700mm×7400mm	390	175	± 1	Customized	Oil Heating

** The size of the Laminator can be customized as per Customer Requirement



ASICPY

INLINE EL TESTER MANUFACTURER

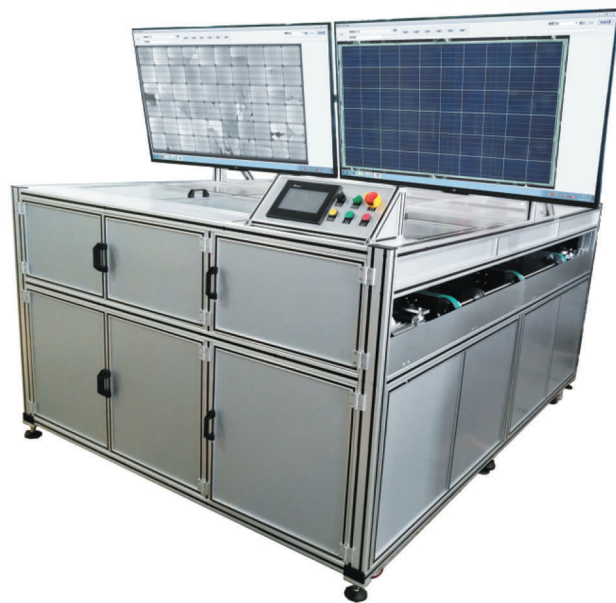


INLINE SOLAR PANEL EL/BVI SCANNER

FUNDAMENTAL DESCRIPTION	Capture Type: Automation Mode, direct capture type
	Applications: Solar Panel pre-lamination or post-lamination
	Camera Qty: Quadruple camera for EL testing Quadruple camera for front VI testing Quadruple camera for rear VI testing
	Camera Resolution: 2,720*1836*4*3 pixels for EL testing (5.0M) 4,000*3,000*4*3 pixels for VI testing (12M) 4,000*3,000*4*3 pixels for VI testing (12M)
	Trans funtion: Length-side on front
	Panel Size included: 1. 12BB(round wire) PERC cells, both gap & gapless(tiling) ← main, half-cut, both mono & bi-facial(with transparent + white patterned backsheet), only framed & glass to backsheet configuration 2. Cell size(to be applied) : M10, M12 3. Module size : L1600~2400mm x W950~1200mm x T30~40mm 4. Gapless (tiling, switchable to normal gap type when it's required) & half-cut technology
	Conveyor height: 950±30mm
	Footprint: W2700mm * L2900mm
	Facility Inquiry: AC 220V 50Hz (240V option) 3KW, CDA (0.6Mpa, M10)
	Cycle time: <25s/pcs (excluding defect judgemet)
	Transportation sample size: Length: 2000~2500mm; Width: 1000~1500mm

INLINE SOLAR PANEL ELVI SCANNER

Applications: Solar Panel pre-lamination
Camera Qty: Quadruple camera for EL testing Quadruple camera for VI testing
Camera Resolution: 2,720*1836*4*3 pixels for EL testing (5M) 4,000*3,000*4*3 pixels for VI testing (12M)
Trans funtion: Length-side on front
Panel Size included: 166*83 mm/12*6 pcs; 166*83mm/10*6 pcs; 182*91 mm/24*6pcs; 182*91 mm/20*6pcs; Up to 2500*1500mm solar panel
Conveyor height: 950±30mm
Footprint: W2900mm * L2800mm
Facility Inquiry: AC 220V 50Hz (240V option), CDA (0.6Mpa, M10)
Cycle time: < 22s/pcs (excluding defect judgemet)
Optical system: Quadruple EL Camera system for EL Quadruple EL Camera system for VI
Transportation sample size: Length: 1700~2500mm; Width: 1000~1500mm



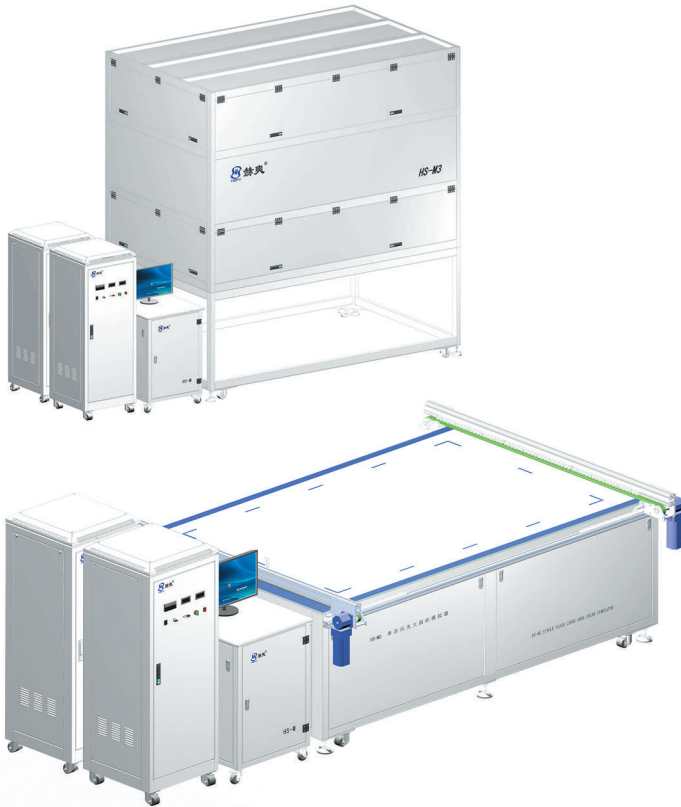
CLIANTECH



OFFLINE SOLAR STRING TESTING & REPAIR STATION

FUNDAMENTAL DESCRIPTION	Capture Type: Automation Mode, direct capture type
	Applications: Solar string
	Camera Resolution: 1,920*1,200*2 pixels for EL testing (1.3M)
	Panel Size included: 166~210 mm full cell/half cell/tri-cut cell string compatible;
	Facility Inquiry: AC 220V 50Hz (240V option), CDA (0.6Mpa, M10)
	Cycle time: < 6s/pcs (excluding defect judgemet)
	Optical system: Duel EL Camera system for EL
	Judgement and Classification: Manually

SOLAR SUN SIMULATOR/IV TESTER



	Item	Specification
General	Grade	A+A+A+ according to IEC 60904-9:2020
	Range of Use	Crystalline/Half cell module /Glass to glass module, center 3 Jbox module PERC/ N type Module Testing
	Effective Area	1400mm*2600mm
Optical Parameters	Light Source Type	High Voltage Xenon Lamp
	Light Direction	Vertical from Above (Top Flash)
	Spectrum Grade	AM 1.5 G Class A+ (0.875-1.125)
	Spectrum Distribution	300nm-1200nm
	Xenon Arc Lamp Lifetime	100,000 Flashes (With Pre-flash function)
	Light Intensity Range	700 - 1200 W/m2
	Pulse Duration	100ms

NDC LASER CUTTER

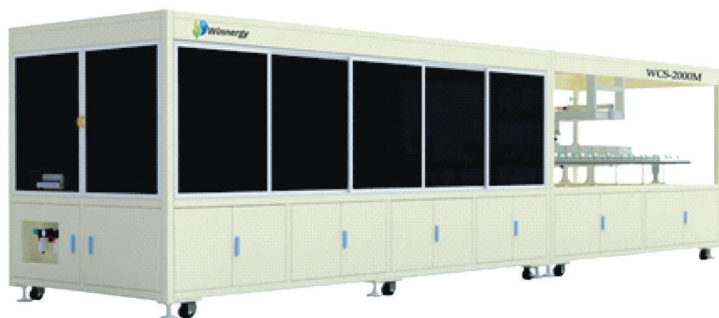
TECHNICAL PARAMETERS

Model	GPV-WS-HP1-7500
Production capacity	≥7200 PCS full cell/H
NG ratio	≤0.05%
Equipment failure rate	≤2%
Cell type	Mono P type or N type bifacial cell
Cell demension	156mm*156mm-230mm*230mm;
Cut mode	1/2 cut (standard) , and 1/N cut optional
Cell thickness	140um-200um
Cutting straightness	±0.075mm
Slotting	From head end or both head/tail end
Slotting length	≤1.5mm



OFFLINE MACHINE MANUFACTURER

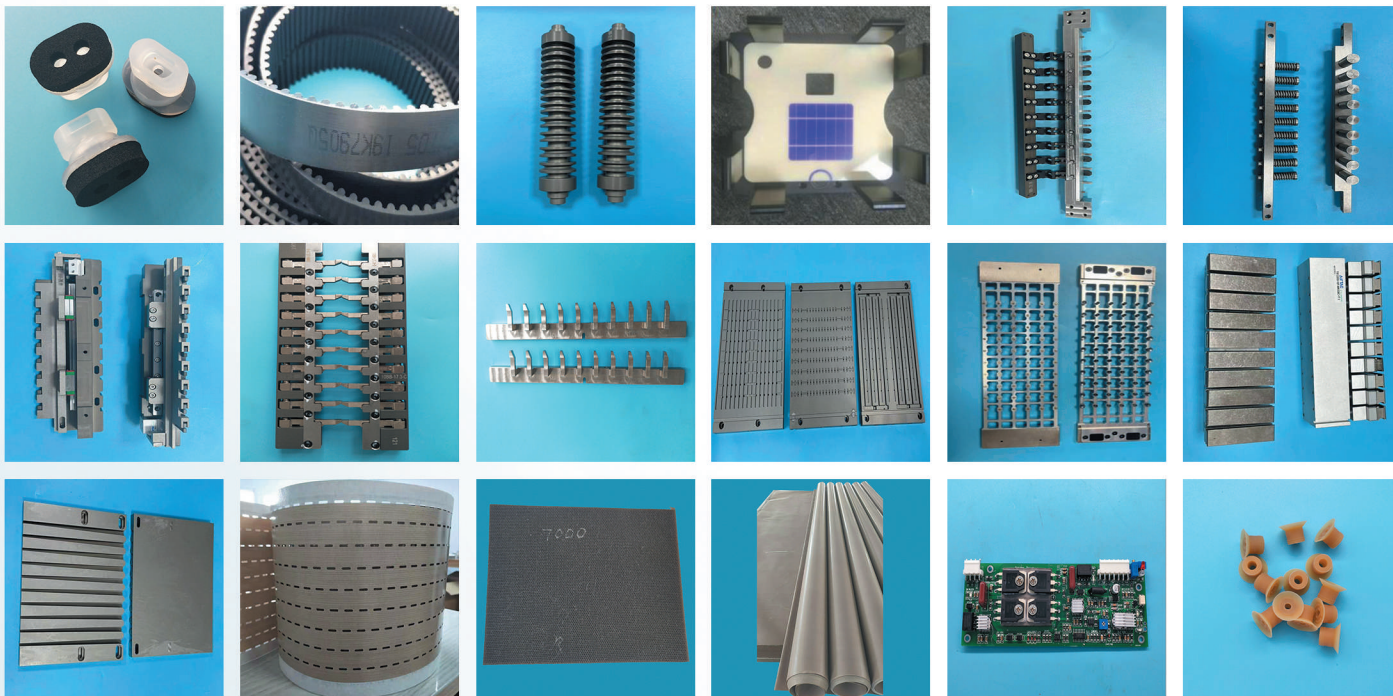
MBB SOLAR CELL TABBER N
STRINGER - WCS-2000M



WINNERGY GRADE A SOLAR
CELL TESTER - WCT-AAA



MACHINES SPARES PARTS AND CONSUMABLES



OUR CUSTOMERS

RAYZON
SOLAR

SAATVIK

MAGNUS
GREEN SOLAR

IMA
the way to
ENERGY

NOVA
Every day is a SUN day

GOLDITM
Renewed life

Quality, Reliability, Excellence
OSWAL
SOLAR

COSMIC
Solar For A Better Future

alpex
Power Forever



APS
AUSTRALIAN PREMIUM SOLAR

navitasolar
conserve | sustain | flourish

WAAREE[®]
One with the Sun

bluebird
co-powering the future

ib SOLARTM
Switch to SOLAR for
a Brighter Tomorrow

SKKYTOP

AATMANIRBHAR
ENERGY FOR NATION

SUNBND
Energy Pvt Ltd

vikramsolar
CREATING CLIMATE FOR CHANGE

SUNIFYTM
Conserving nature

RSPL
Power of Nature

Raajratna Ventures Ltd.
AN ISO 9001:2008 Certified Company

UTL SOLAR

SUNORA

SOLARIUM

SOLAR PVT. LTD.

INTER SOLAR[®]
Since 1997
(AN ISO 9001:2008 & 14001:2004 CERTIFIED CO.)

JAKSONTM
EMPOWERING PEOPLE

PV POWER TECH

powertrac
UPDATES YOUR NEEDS

SASA
ENERGY LLP

Topsun[®]
Future is Secured

ACME | SOLAR

भारत इलेक्ट्रॉनिक्स
BHARAT ELECTRONICS

Pennar



Office No- 1210, 12th Floor Gaur
City mall, C-01/BGH-01, Sector-04
Greater Noida (West) India
Uttar Pradesh, India



+91 99100 05240, 99887 45288



info@cliantechsolutions.com



www.cliantechsolutions.com